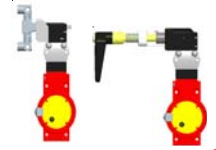


Data Sheet

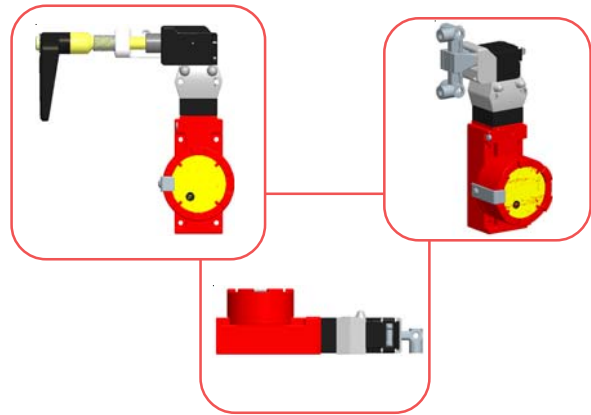
Stop XP / TX



amGard safety gate switch solutions consist of a range of 'Control interlocks'. The control Interlocks are split into gate switches (Stops) and solenoid Interlocks (Loks). Combining tamper proof locking mechanisms and dual channel safety circuitry amGard is suitable for category 4 applications.

description:

Stop XP/TX products are heavy duty explosion protection safety gate switches designed to provide versatile solution to controlling access to machinery and process lines operating in potentially explosive environments. Suitable for use in zone 1 and 2 environments found in the chemical and petrochemical paint, pharmaceutical, powders and mining industries.



options:

UL/CSA Certified Product

AtStopXP



ATEX Certified Product

AtStopTX



UL/CSA Certified Product

AmStopXP



ATEX Certified Product

AmStopTX

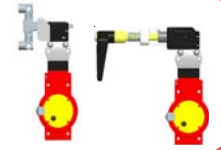


part number

part number

Technical Data

Stop XP / TX

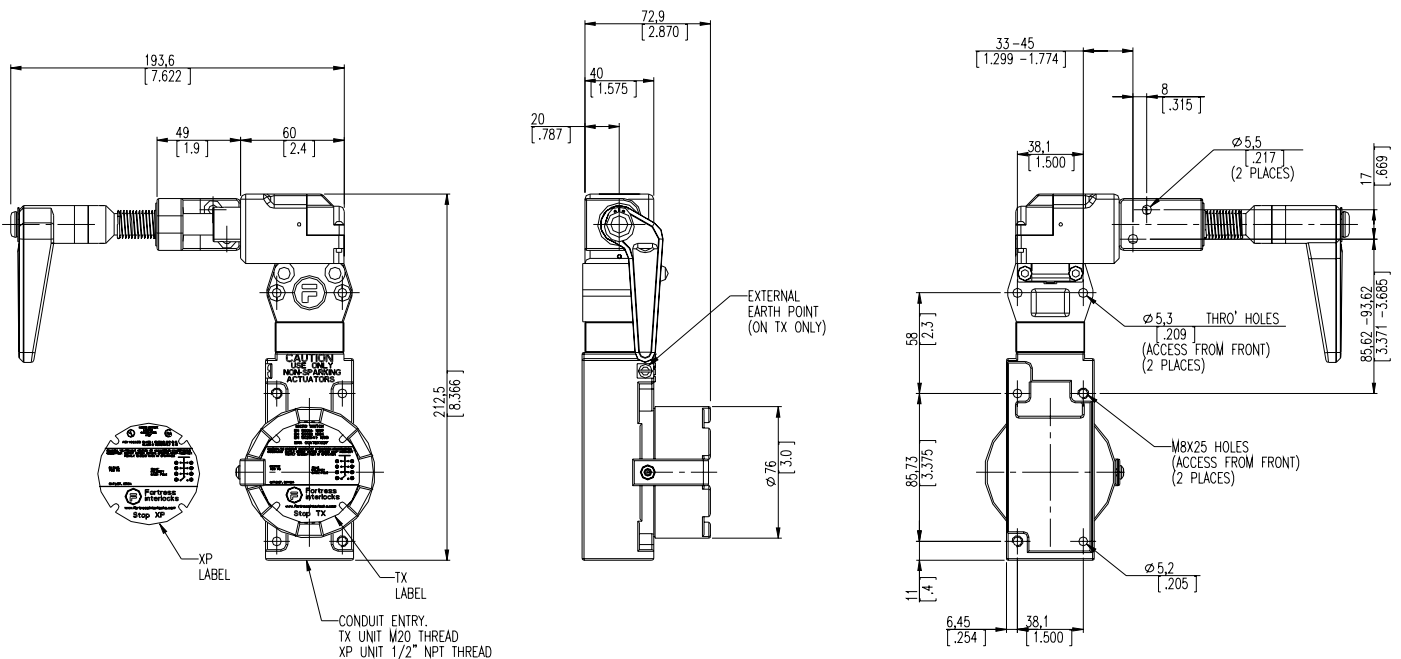


Features & Benefits

Certification	UL/CSA, ATEX
Switch	Dual channel force break safety switch
	3/N/C 1 N/O
Misalignment	Am - +/- 3mm At - +/- 12mm
Heads	Am & At 360° at 90° increments
Door	Suitable for sliding or hinged doors.
Actuators	Am - Handle At - Tongue Actuator
Sequence	Door open control power isolated
Safety Key Modules	Available

Technical Specification

Certification:	XP - UL (#E61730) CSA (#LR57327) TX - ATEX – En50014:1997, En50018:1994, En50281:1998, SIRA 00ATEX1037
Protection against Dust & Water:	XP- NEMA 1, 3, 4, 6, 7, 9 and 13 TX – IP67
Rated AC Voltage (IEC947-5-1):	AC15 A300, 240V, 720 VA
Rated DC Voltage (IEC947-5-1):	DC13 Q300, 240V, 69 VA
Material:	Stainless Steel, Brass, Aluminium & Zinc Alloy.
Gland Entry:	XP – 3/4" – 14 NPT TX – M20
Safety Switch Type:	Positive Break (N/C Contacts)
Contacts:	3 N/C, 1 N/O
Switch contact gap:	5mm
Operating temperature:	-12 to 85° C (10 to 185° F)





**INDUSTRIAL
SAFETY SALES INC.**

P.O. Box 126 -- 4112 Sheridan Road
Kenosha, WI 53141
Fax: (262) 652-1388
E-mail: safetysensing@earthlink.net

(262) 652-8660